

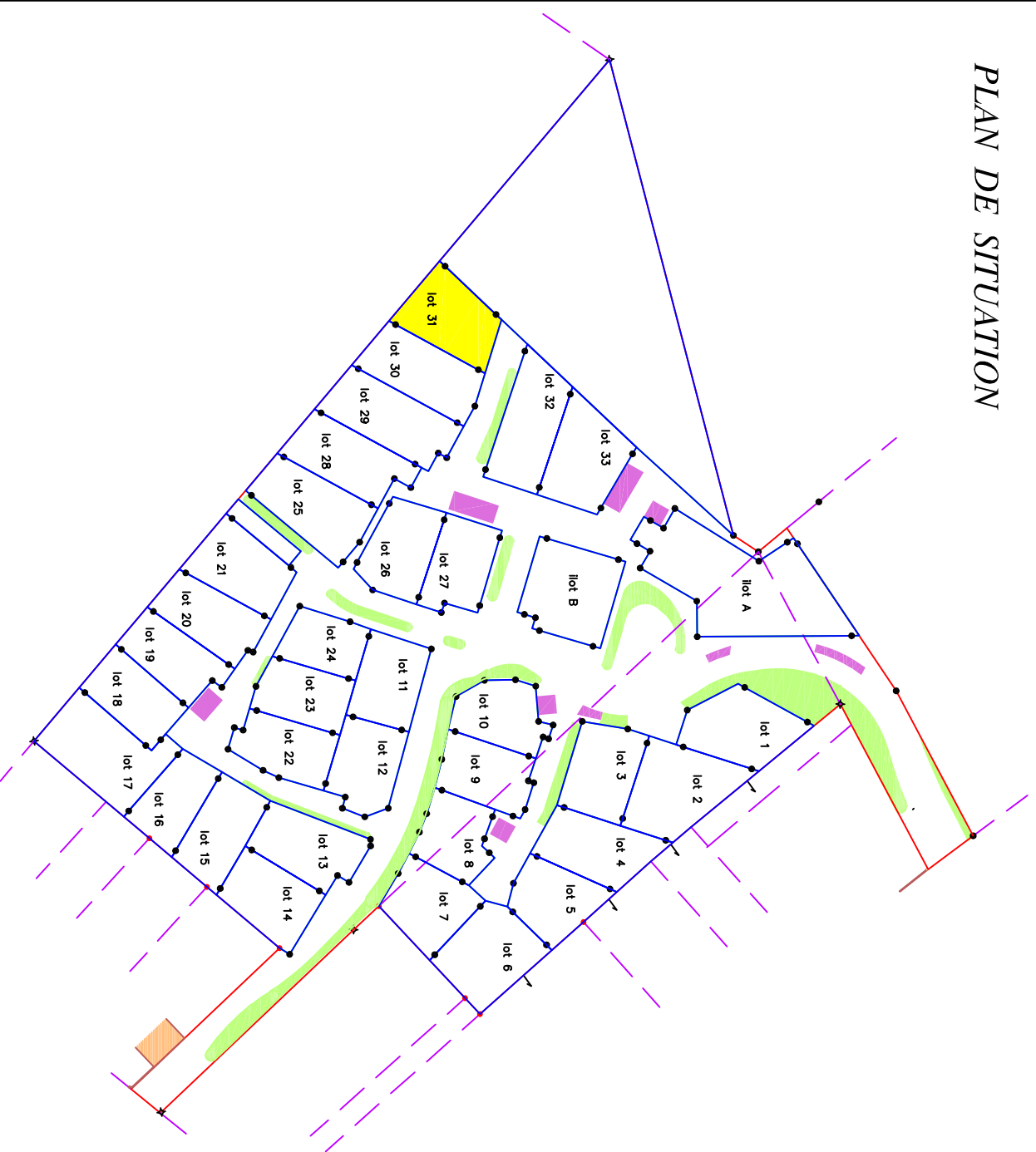
COMMUNE DE FILLE SUR SARTHE

Lotissement : "Le Clos De L'Aunay"

AMENAGEUR : SARTHE HABITAT

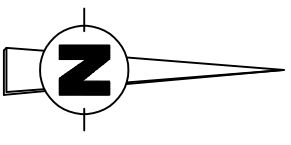
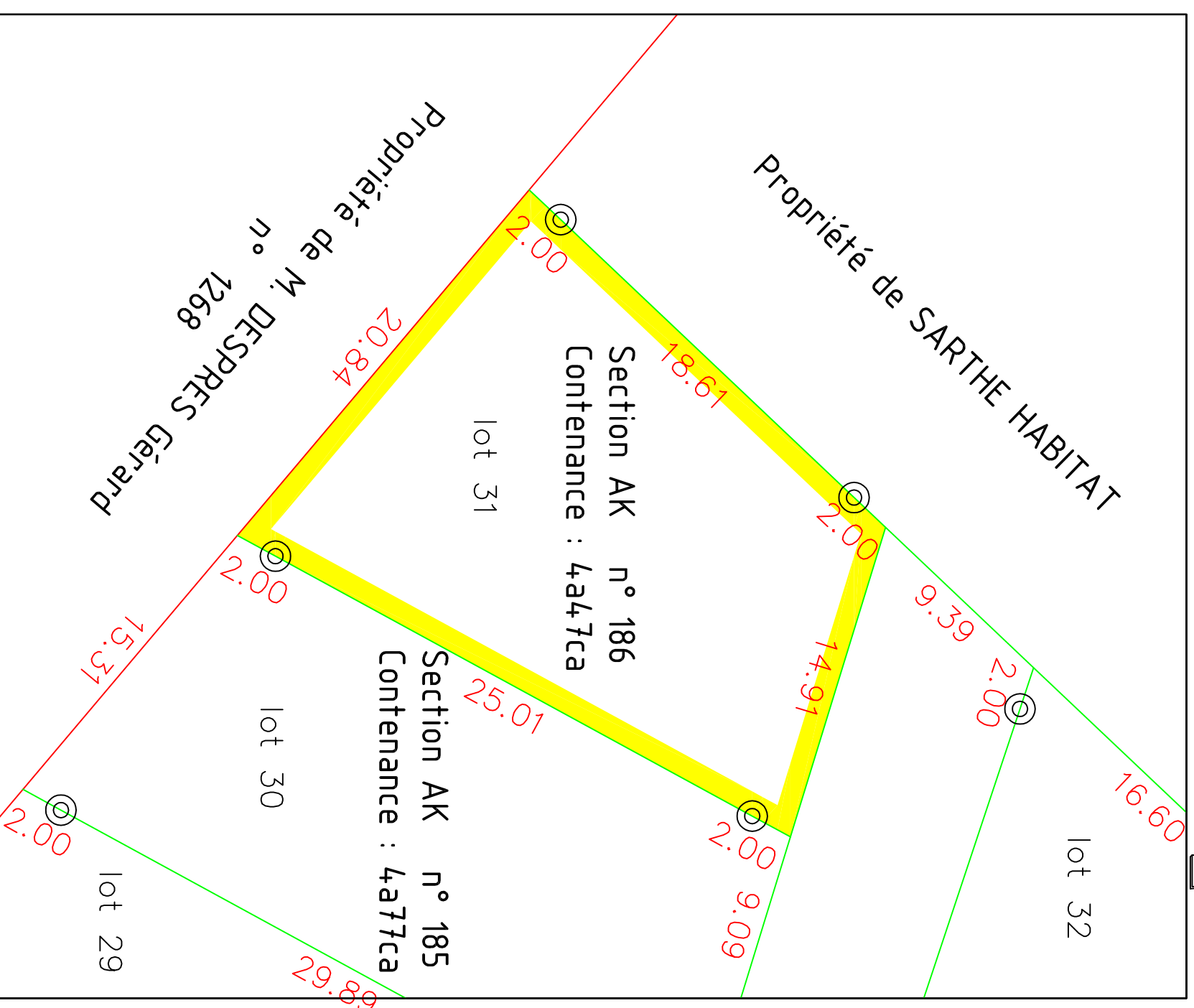
PLAN DE VENTE DU LOT n° 31

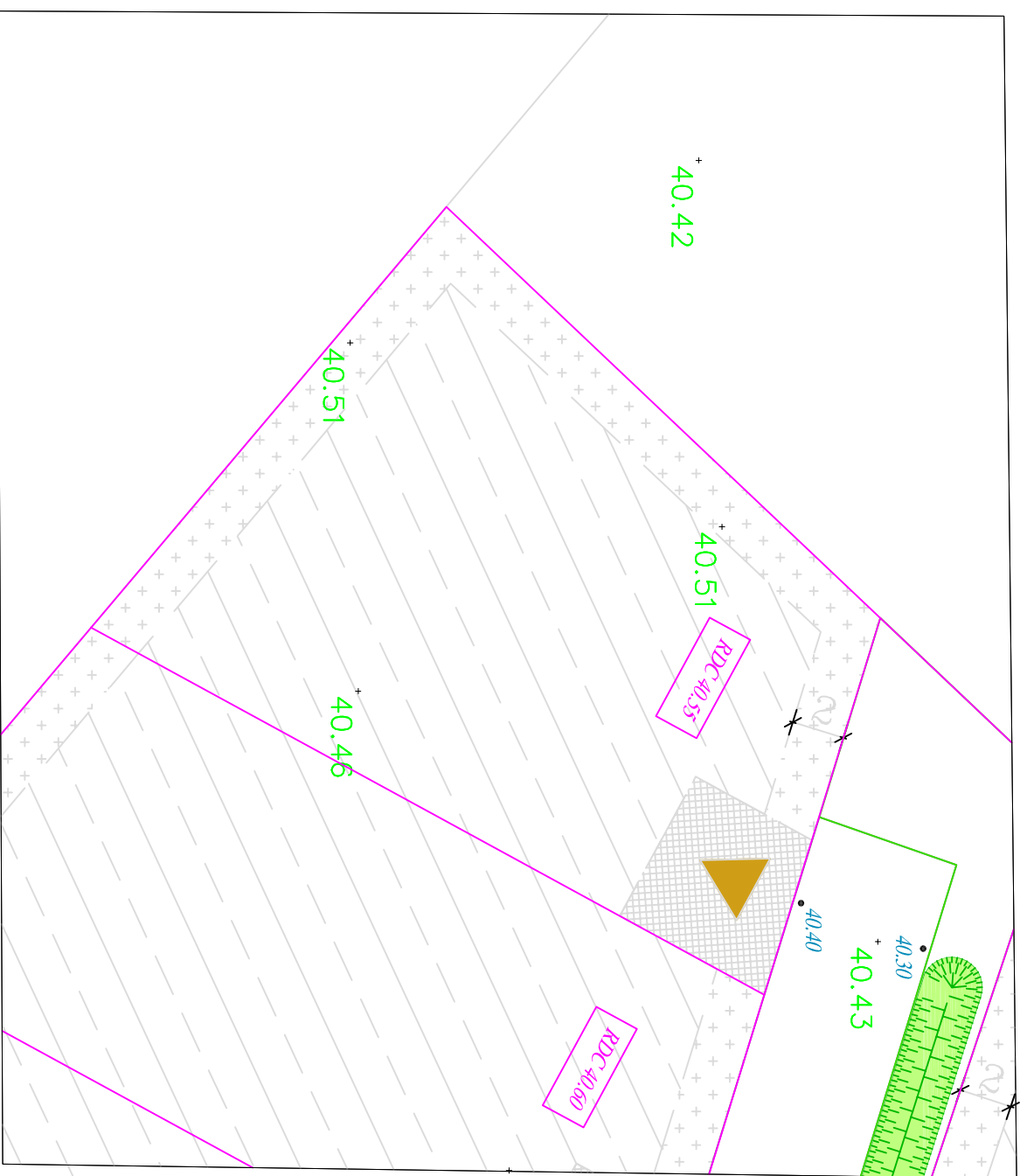
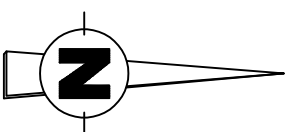
PLAN DE SITUATION




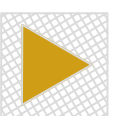
PLAN DE BORNAGE


ECHELLE : 1/250



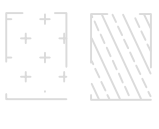


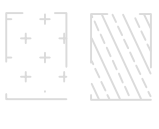
 Parking public

 Accès - inconstructible

 40.40
Cotes projet

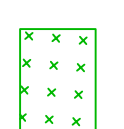
 RDC 40,15
seuil mini : Altitude du RDC

 Zone constructible Primaire

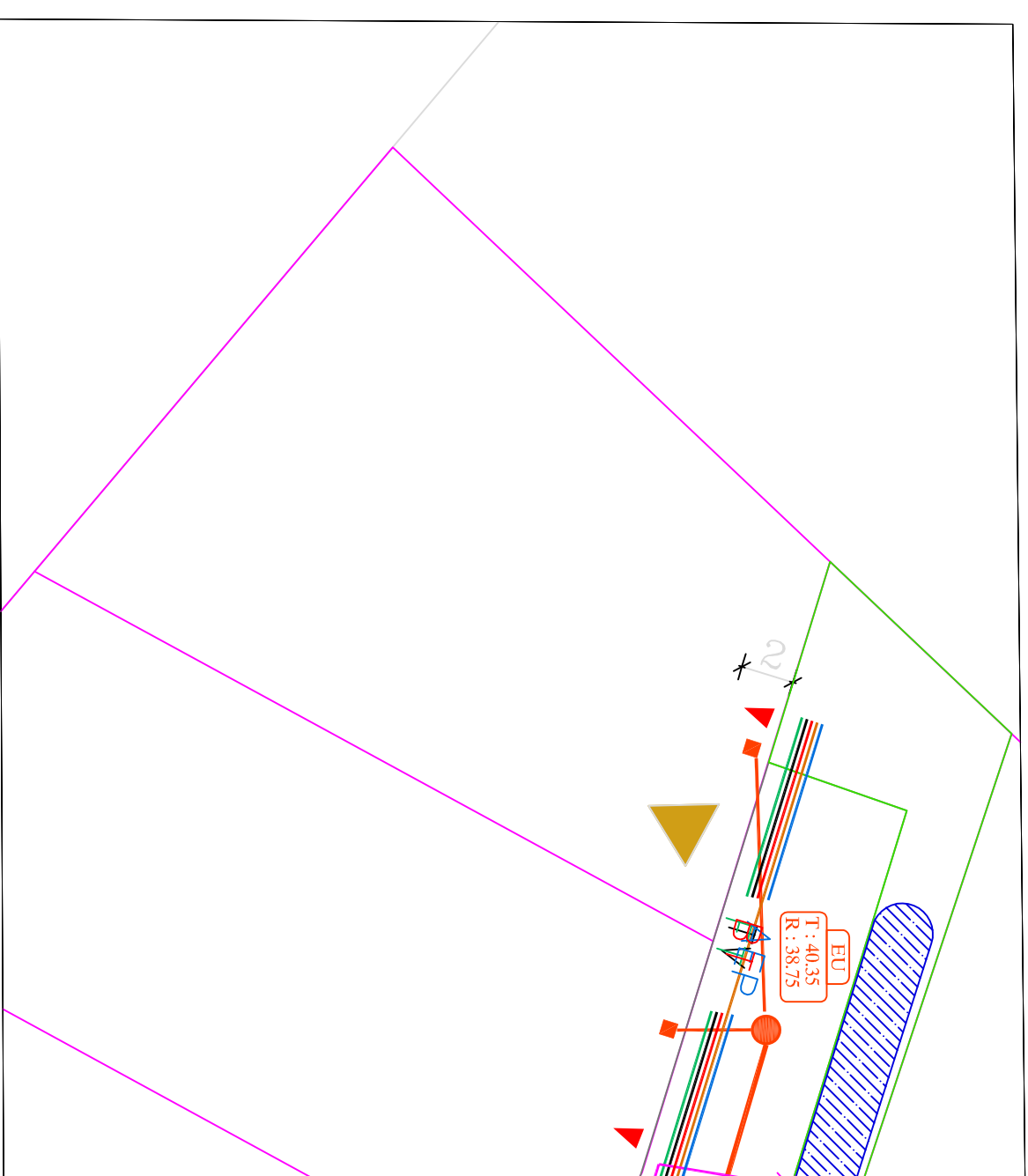
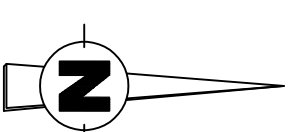
 Zone inconstructible

 3
Cotation de la largeur de la zone

 40.22
Cotes terrain naturel


Apport de terre végétale autour de l'emprise
potentielle de la future construction entre
10 à 40 cm d'épaisseur


Arbres




Légende

 Branchement Eaux Usées


 Branchement (EDF, GAZ, AEP, FT).

 Candélabre

 Réseau eau pluviale

 Réseau eau usée

 Réseau AEP (Adduction Eau Potable)

 Réseau GAZ

 Réseau BT (Basse Tension)

 Réseau télévision

 Réseau FT (France Telecom)

 Réseau EP (Eclairage Public)