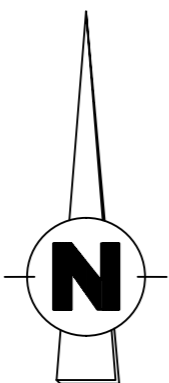
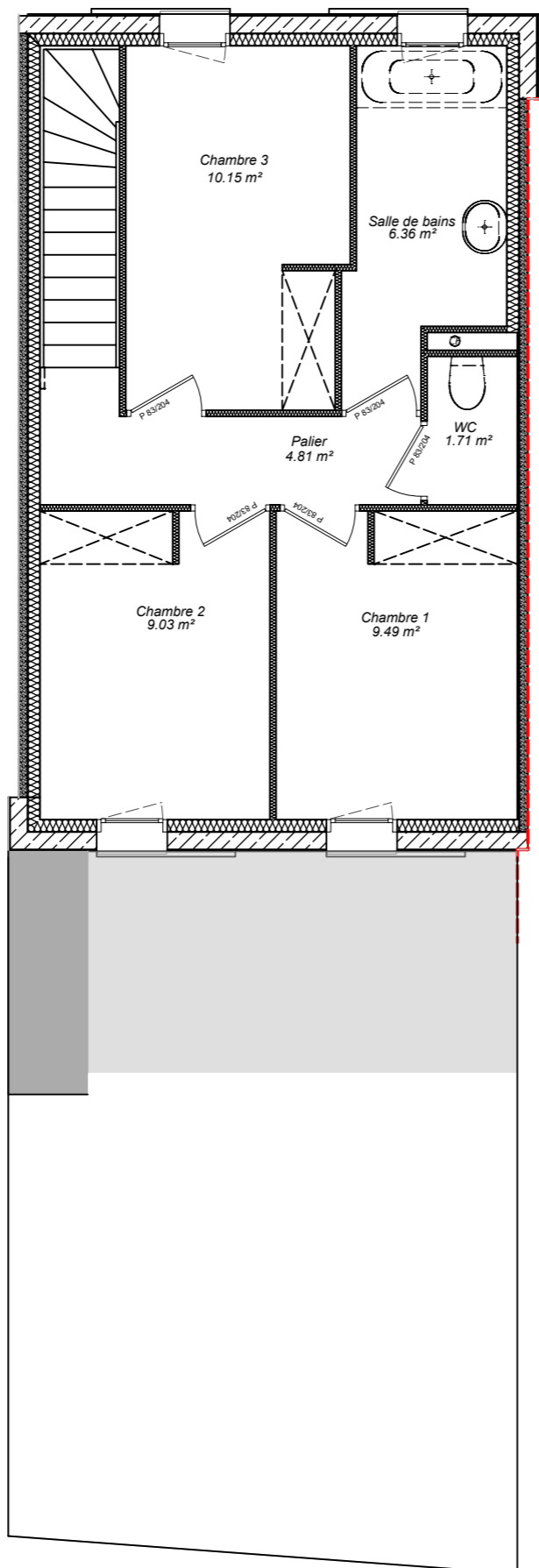
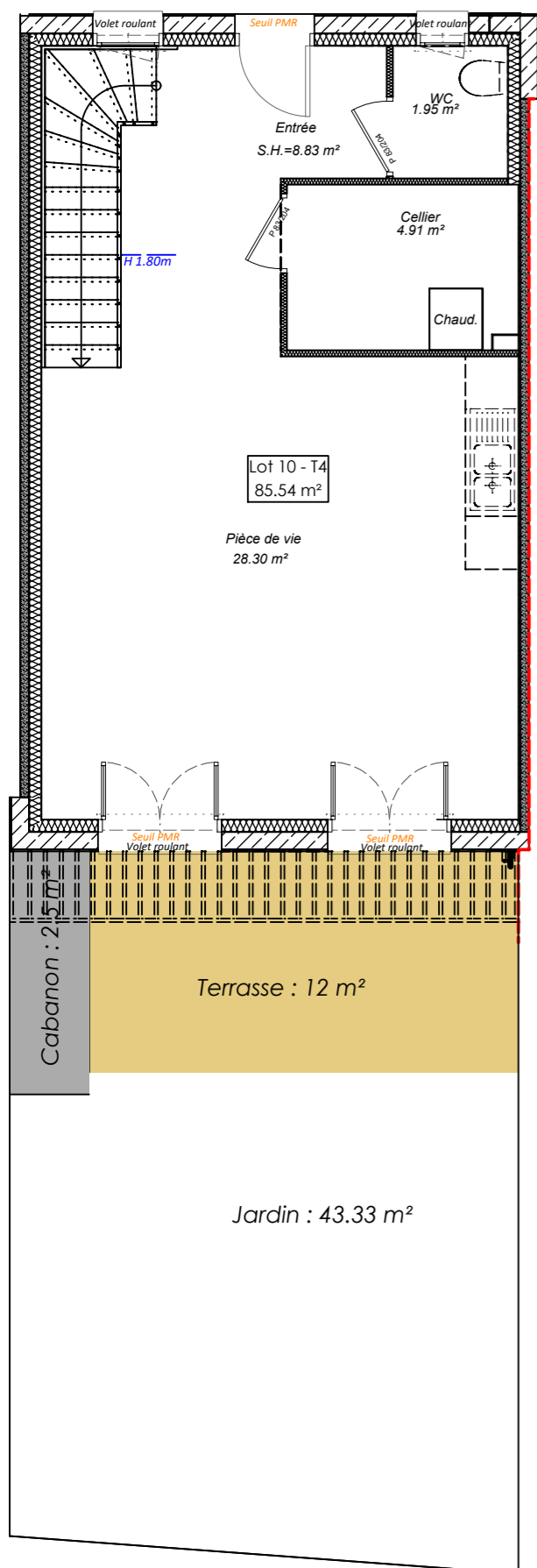


REZ DE CHAUSSEE

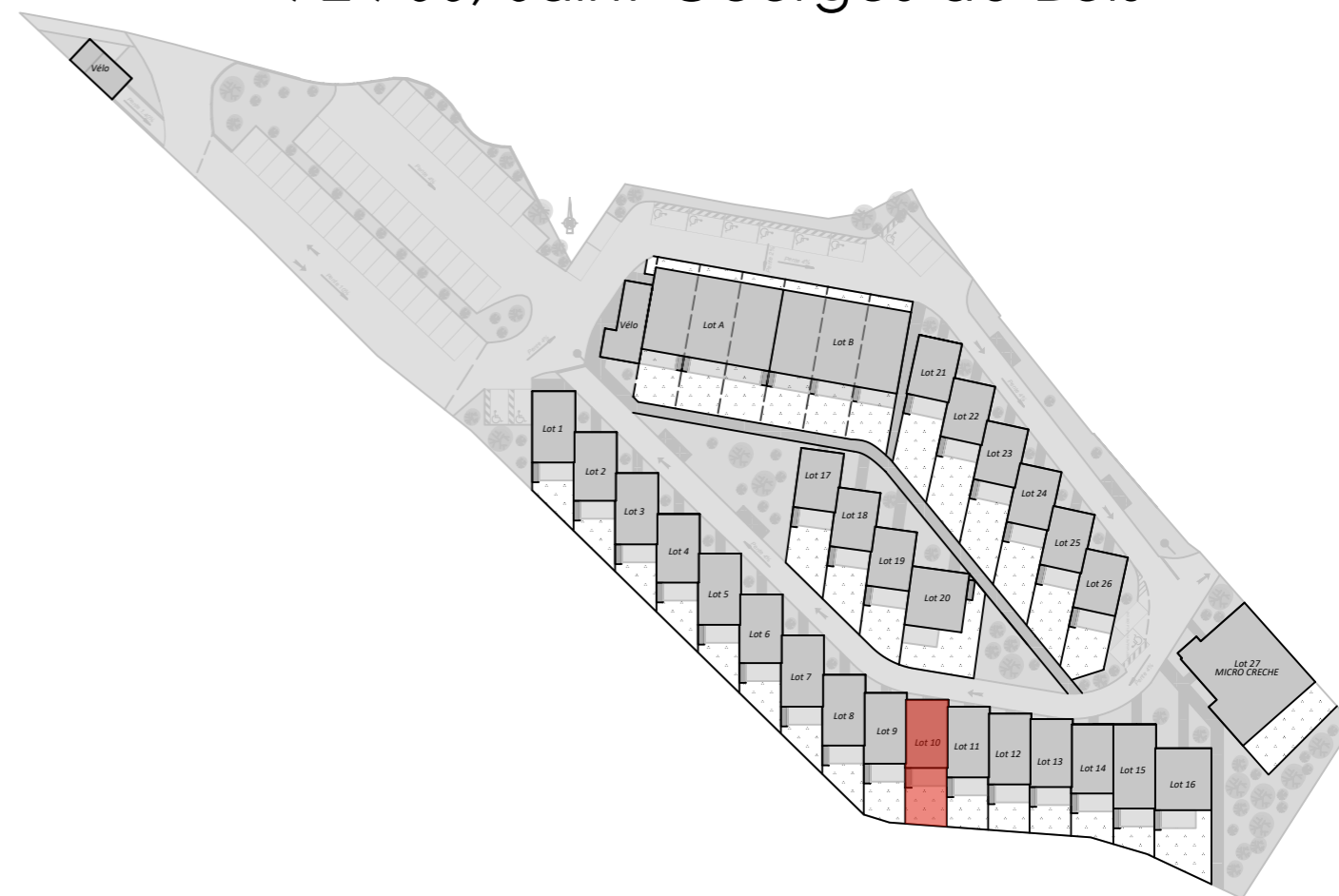
ETAGE



LE CLOS DES HAYES

"Les Hayes"

72 700, Saint-Georges-du-Bois



Surface Logement 10 - T4	
REZ-DE-CHAUSSEE	
Entrée	8,83 m ²
WC	1,95 m ²
Cellier	4,91 m ²
Pièce de vie	28,30 m ²
ETAGE	
Palier	4,81 m ²
Chambre 3	10,15 m ²
Salle de bains	6,36 m ²
WC	1,71 m ²
Chambre 1	9,49 m ²
Chambre 2	9,03 m ²
Total habitable	85,54 m²
SURFACES DIVERSES	
Cabanon	2,5 m ²
Terrasse	12 m ²
Jardin	43,33 m ²



YesWimmo
Immobilier autrement



Sarthe Habitat

www.yeswimmo.lmno



ATB SAS
4 rue Ville Close
61130 BELLEME
Tel : 06-81-00-61-85
laurenttacheau@orange.fr