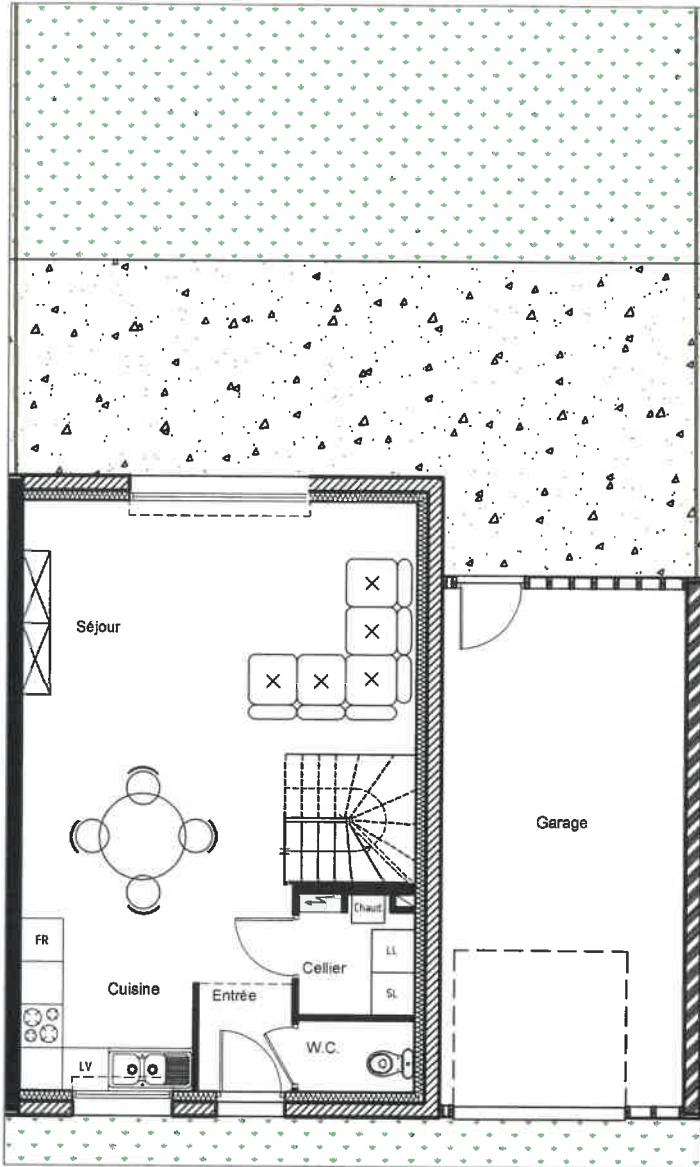
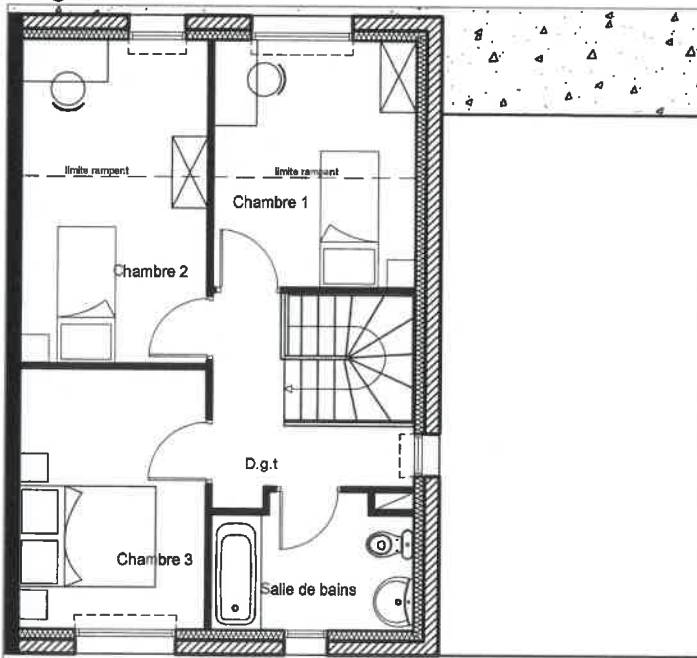


Rez-de-chaussée



Etage



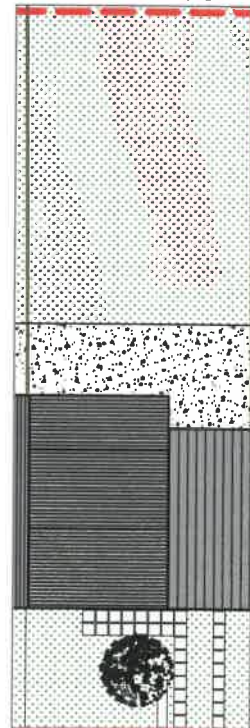
CONSTRUCTION DE 20 LOGEMENTS AU MANS

TYPE 4 n°11
82,14 m²

SURFACES

Entrée	1,95 m ²
W.C	1,61 m ²
Cellier	2,47 m ²
Cuisine	5,80 m ²
Séjour	29,80 m ²
Surface RDC	41,63 m²
Dégagement	4,55 m ²
Chambre 1	9,74 m ²
Chambre 2	11,83 m ²
Chambre 3	9,44 m ²
Salle de bains	4,95 m ²
Surface Etage	40,51 m²
Surface Habitable	82,14 m²
Garage	24,70 m ²
Jardin clos	156,00 m ²

Plan d'ensemble



Façades d'ensemble

