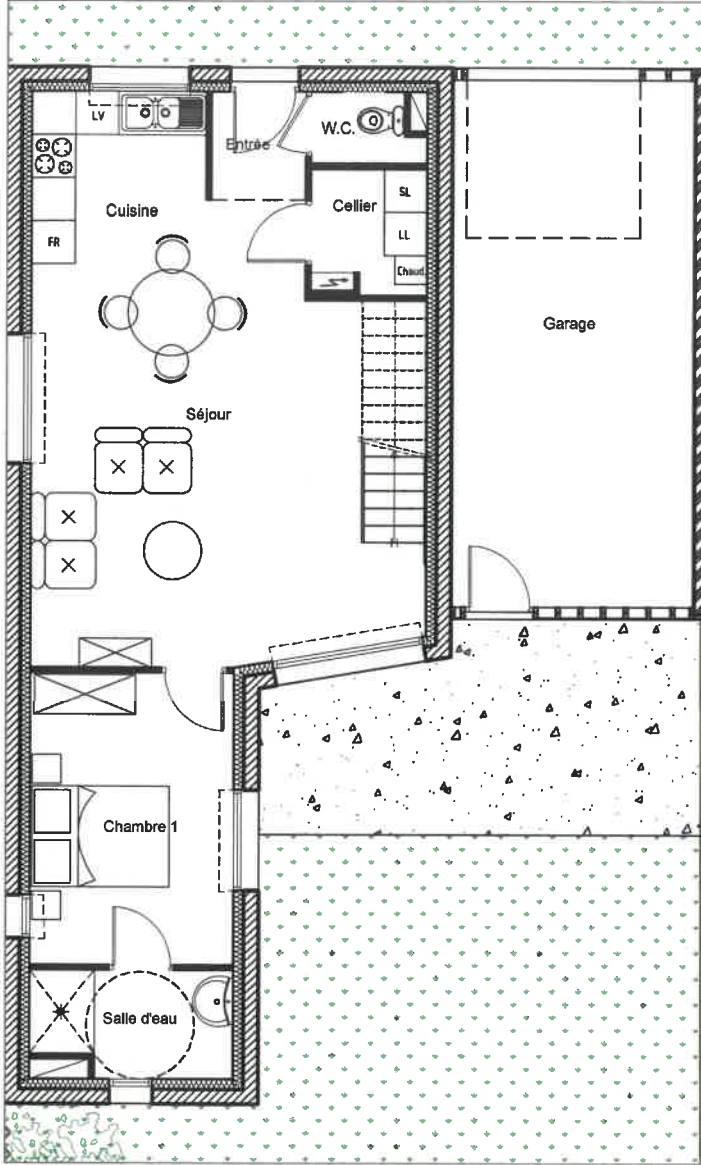
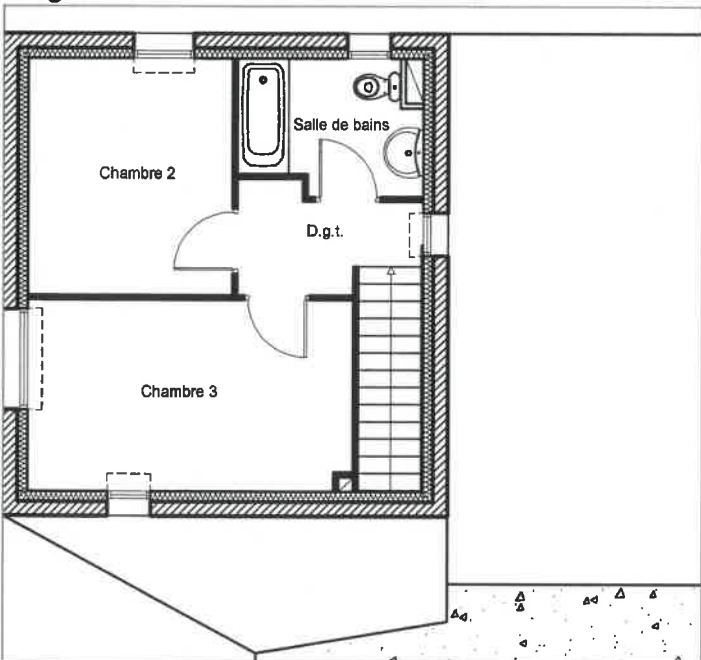


Rez-de-chaussée



Etage



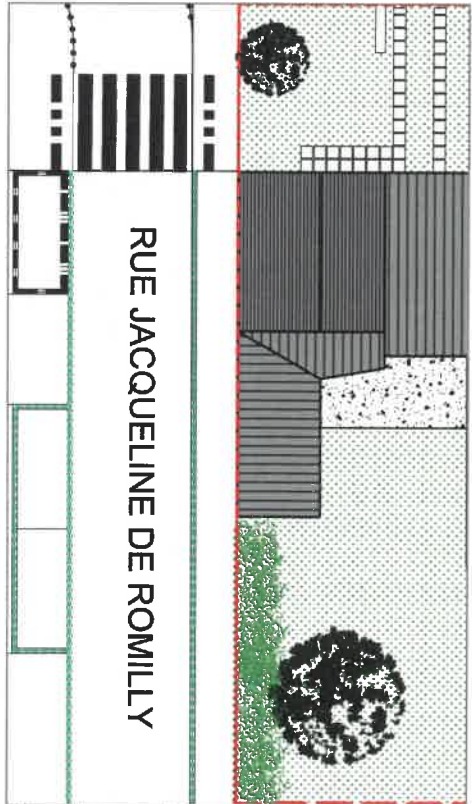
CONSTRUCTION DE 20 LOGEMENTS AU MANS

TYPE 4 n°14
84.24 m²

SURFACES

| | |
|--------------------------|----------------------------|
| Entrée | 1,95 m ² |
| W.C | 1,41 m ² |
| Cellier | 2,62 m ² |
| Cuisine | 5,80 m ² |
| Séjour | 28,07 m ² |
| Chambre 1 | 11,47 m ² |
| Salle d'eau | 3,97 m ² |
| Surface RDC | 55,29 m² |
| Dégagement | 3,24 m ² |
| Chambre 2 | 9,34 m ² |
| Chambre 3 | 11,94 m ² |
| Salle de bains | 4,43 m ² |
| Surface Etage | 28,95 m² |
| Surface Habitable | 84,24 m² |
| Garage | 24,45 m ² |
| Jardin clos | 155,00 m ² |

Plan d'ensemble



Façades d'ensemble

