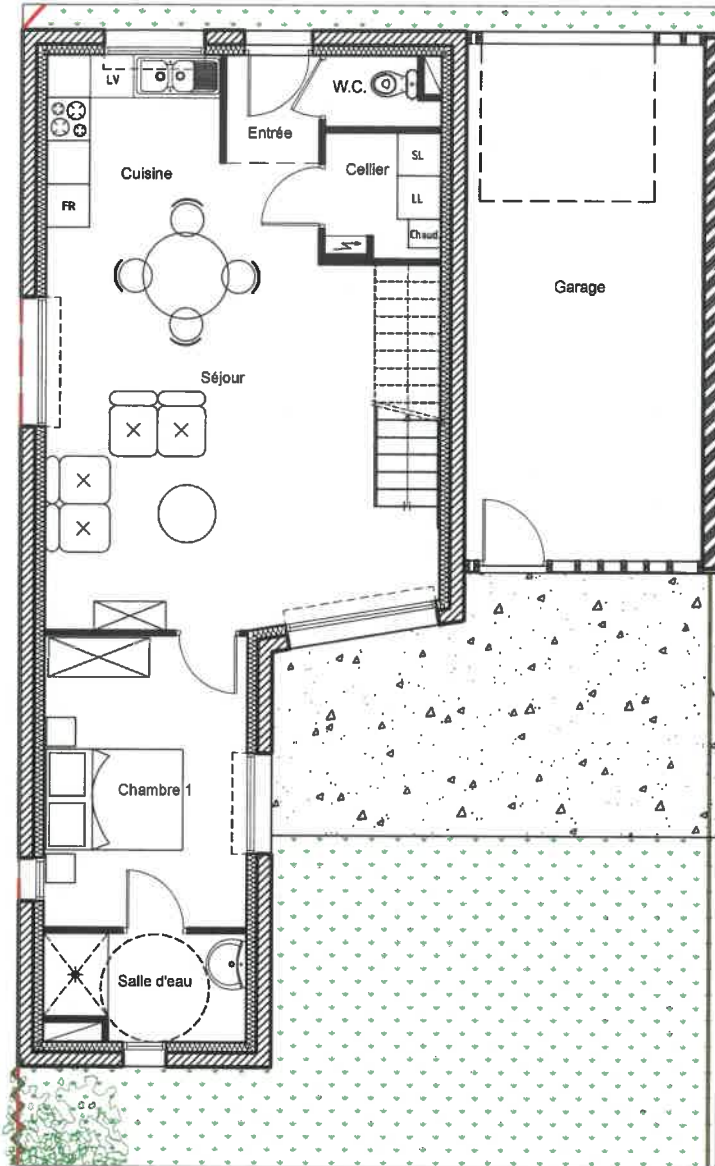


Rez-de-chaussée



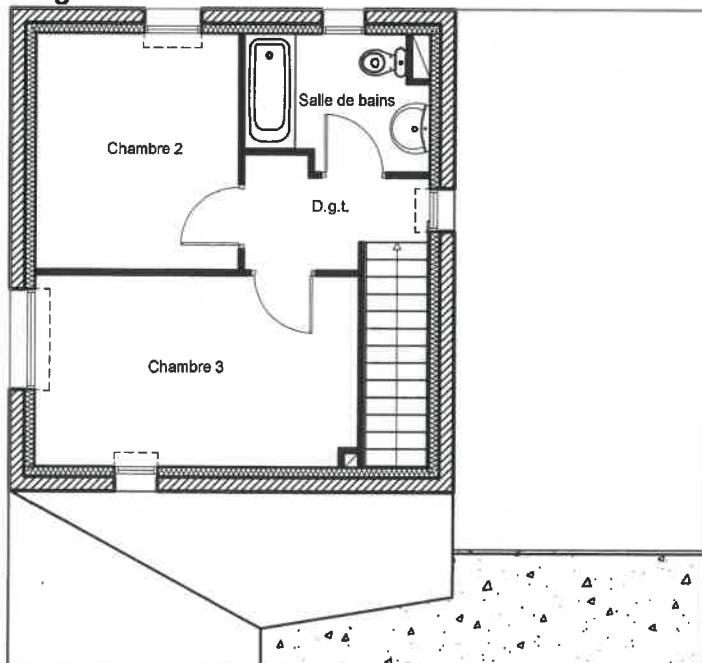
**CONSTRUCTION DE 20 LOGEMENTS
AU MANS**

**TYPE 4 n°1
84,24 m²**

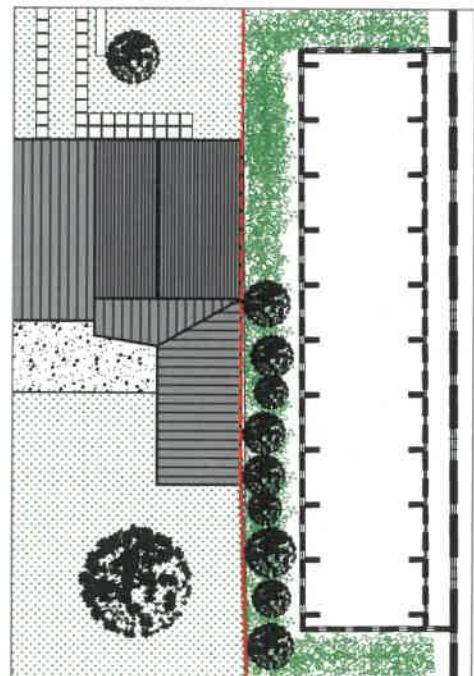
SURFACES

Entrée	1,95 m ²
W.C	1,41 m ²
Cellier	2,62 m ²
Cuisine	5,80 m ²
Séjour	28,07 m ²
Chambre 1	11,47 m ²
Salle d'eau	3,97 m ²
Surface RDC	55,29 m²
Dégagement	3,24 m ²
Chambre 2	9,34 m ²
Chambre 3	11,94 m ²
Salle de bains	4,43 m ²
Surface Etage	28,95 m²
Surface Habitable	84,24 m²
Garage	23,69 m ²
Jardin clos	118,00 m ²

Etage



Plan d'ensemble



Façades d'ensemble

