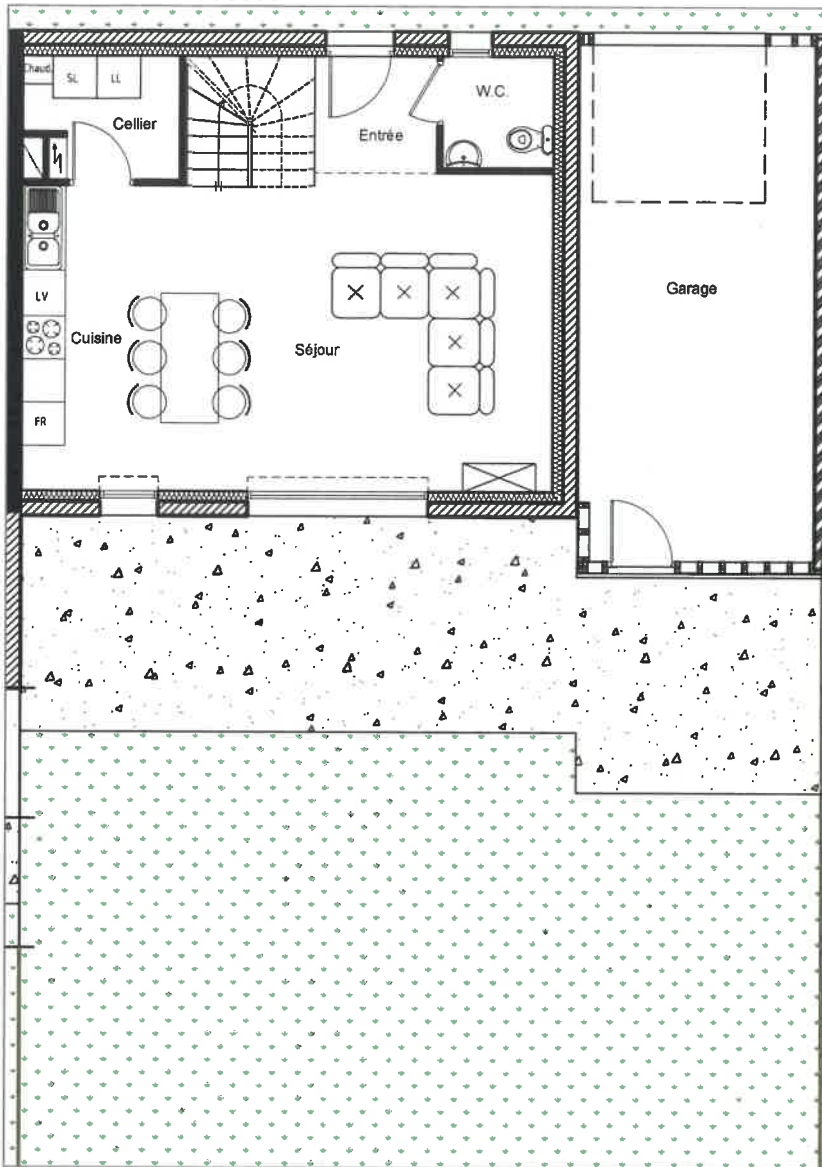


Rez-de-chaussée



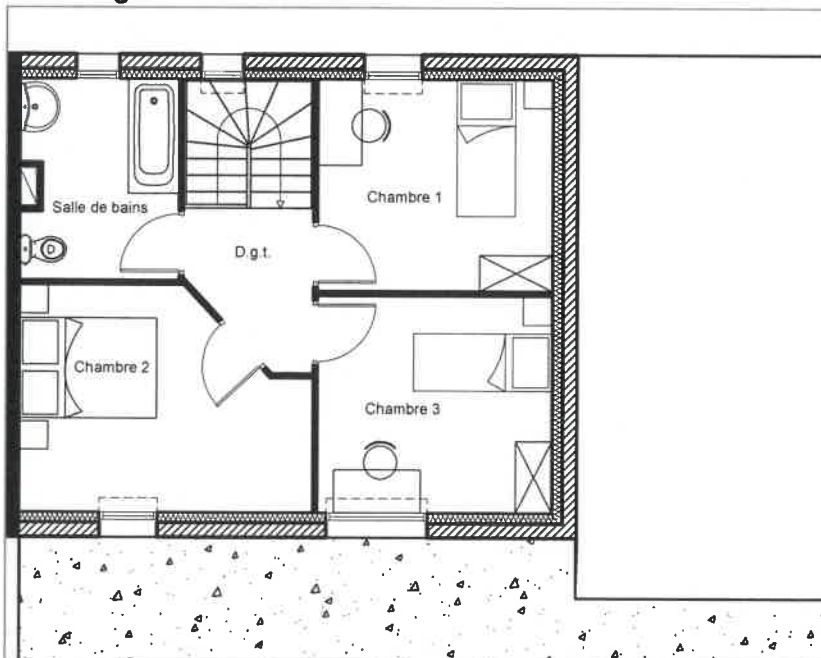
CONSTRUCTION DE 20 LOGEMENTS AU MANS

TYPE 4 n°3
81,02 m²

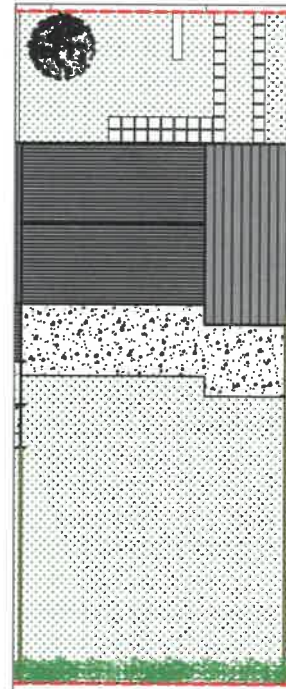
SURFACES

Entrée	2,75 m ²
W.C	2,37 m ²
Cellier	3,39 m ²
Cuisine	8,92 m ²
Séjour	23,70 m ²
Surface RDC	41,13 m²
Dégagement	3,32 m ²
Chambre 1	9,53 m ²
Chambre 2	11,35 m ²
Chambre 3	9,75 m ²
Salle de bains	5,94 m ²
Surface Etage	39,89 m²
Surface Habitable	81,02 m²
Garage	23,55 m ²
Jardin clos	173,00 m ²

Etage



Plan d'ensemble



Façades d'ensemble

