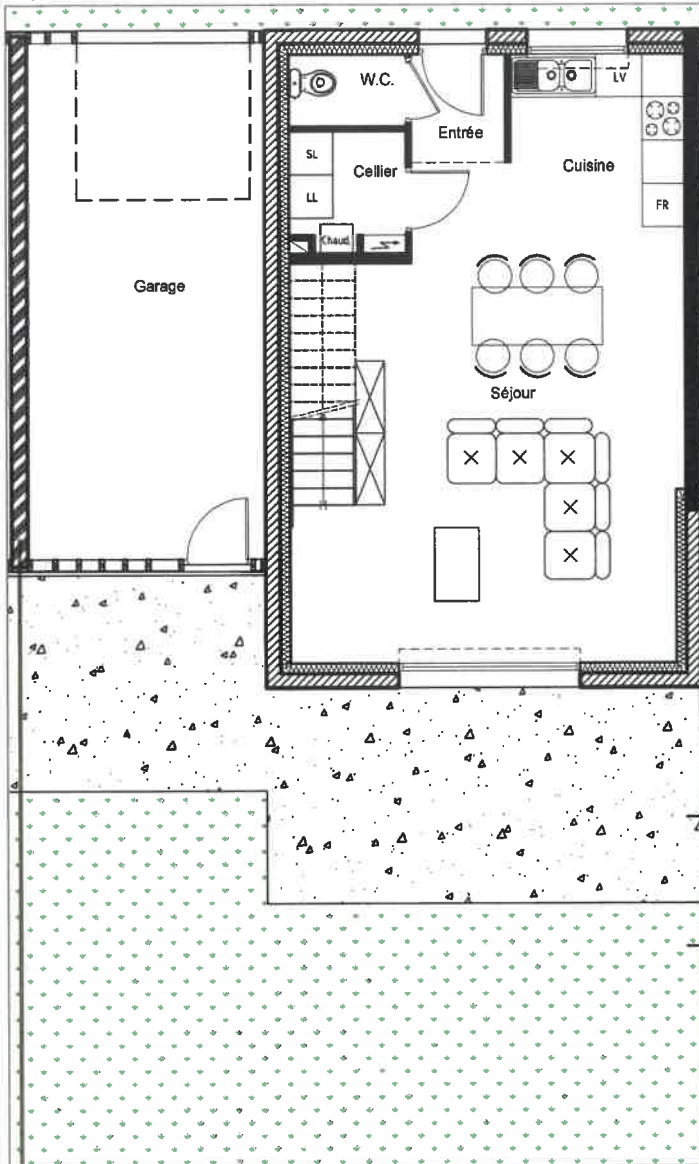


Rez-de-chaussée



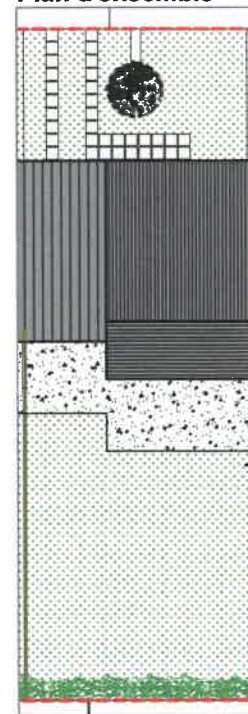
**CONSTRUCTION DE 20 LOGEMENTS
AU MANS**

**TYPE 3 n°4
71,73 m²**

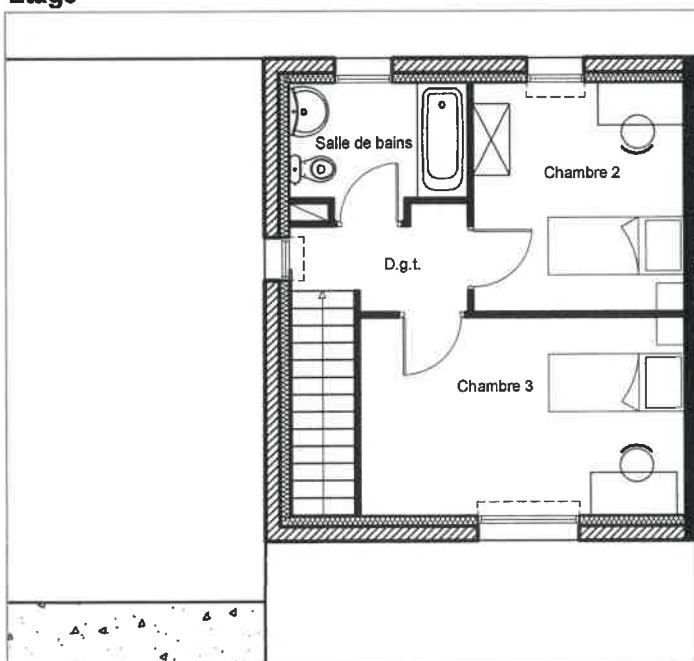
SURFACES

Entrée	1,95 m ²
W.C	1,61 m ²
Cellier	2,47 m ²
Cuisine	5,80 m ²
Séjour	30,83 m ²
Surface RDC	42,66 m²
Dégagement	2,93 m ²
Chambre 2	9,38 m ²
Chambre 3	12,47 m ²
Salle de bains	4,29 m ²
Surface Etage	29,07 m²
Surface Habitable	71,73 m²
Garage	23,69 m ²
Jardin clos	132,00 m ²

Plan d'ensemble



Etage



Façades d'ensemble

