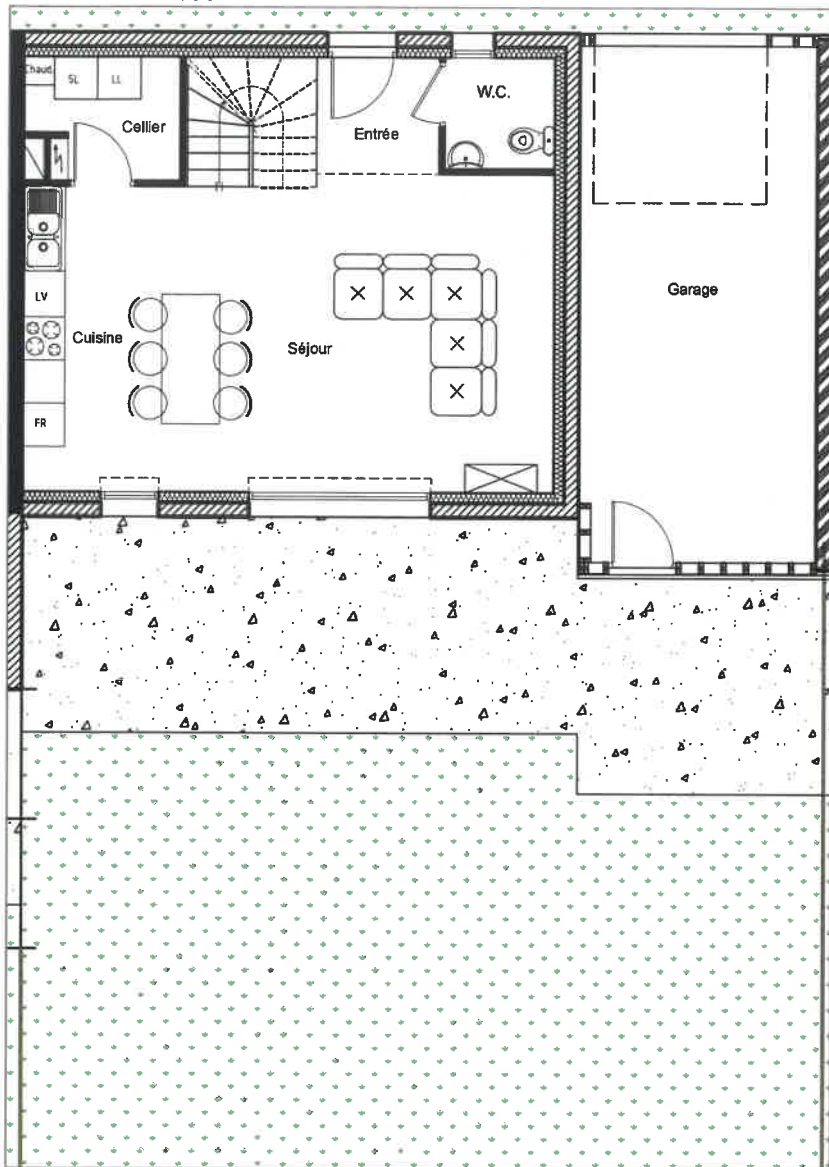


Rez-de-chaussée



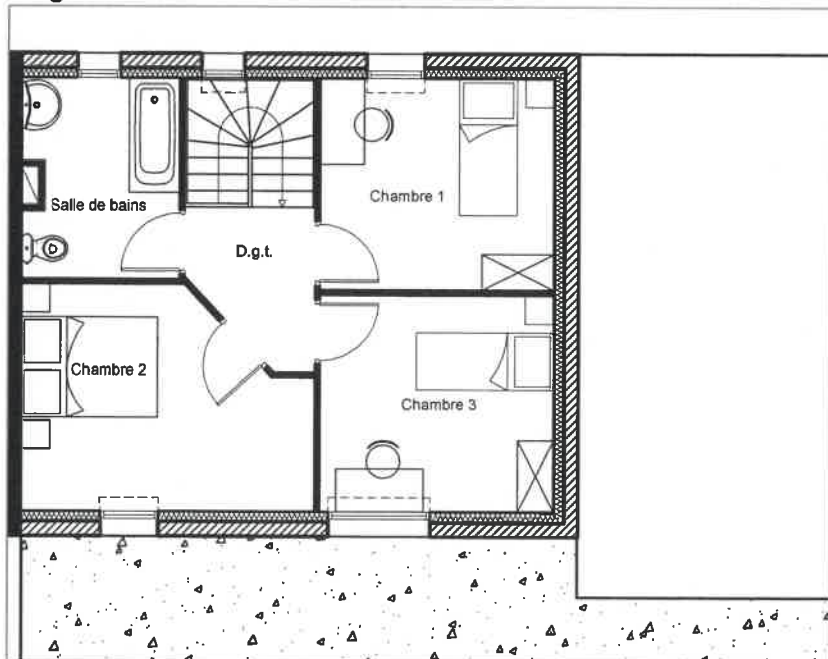
**CONSTRUCTION DE 20 LOGEMENTS
AU MANS**

**TYPE 4 n°5
81,02 m²**

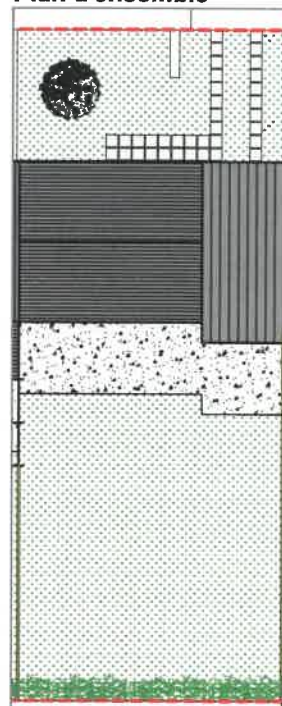
SURFACES

| | |
|--------------------------|----------------------------|
| Entrée | 2,75 m ² |
| W.C | 2,37 m ² |
| Cellier | 3,39 m ² |
| Cuisine | 8,92 m ² |
| Séjour | 23,70 m ² |
| Surface RDC | 41,13 m² |
| Dégagement | 3,32 m ² |
| Chambre 1 | 9,53 m ² |
| Chambre 2 | 11,35 m ² |
| Chambre 3 | 9,75 m ² |
| Salle de bains | 5,94 m ² |
| Surface Etage | 39,89 m² |
| Surface Habitable | 81,02 m² |
| Garage | 23,55 m ² |
| Jardin clos | 173,00 m ² |

Etage



Plan d'ensemble



Façades d'ensemble

